



LINGONG HEAVY MACHINERY CO., LTD
Address: No. 2676, Kejia Road, Jinan, Shandong, China
Email: sales@lgmg.com.cn
Tel: +86 531 6787 9283
www.lgmglifts.com

Information of agent



Please contact LGMG or local dealer for more details.
LGMG reserves the right to change technical data without prior notice.
All photos and pictures in this brochure are for promotional purpose only. Some of the pictures are from customers. If you have any objection, please contact us in time.
This brochure comes into effect in May, 2024.

LGMG

TELEHANDLERS



Contents



01-02

Contents

15-16

Fixed Telehandlers

23-26

Load Charts

03-04

Group Profile

17-18

Agricultural Telehandler

27-32

Specifications

05-06

LGMG Telehandler

19-20

Rotating Telehandler

33-34

Options

07-14

Product Highlights

21-22

US Market-oriented
Telehandler

34

Top Service

Group Profile

Established in 1972, the Lingong Group is recognized among the top 100 enterprises in construction machinery industry globally and ranks as one of the sector's five leading groups in China. Its business spans five key sectors: construction machinery, mining machinery, aerial work platforms, special machinery, and component manufacturing.

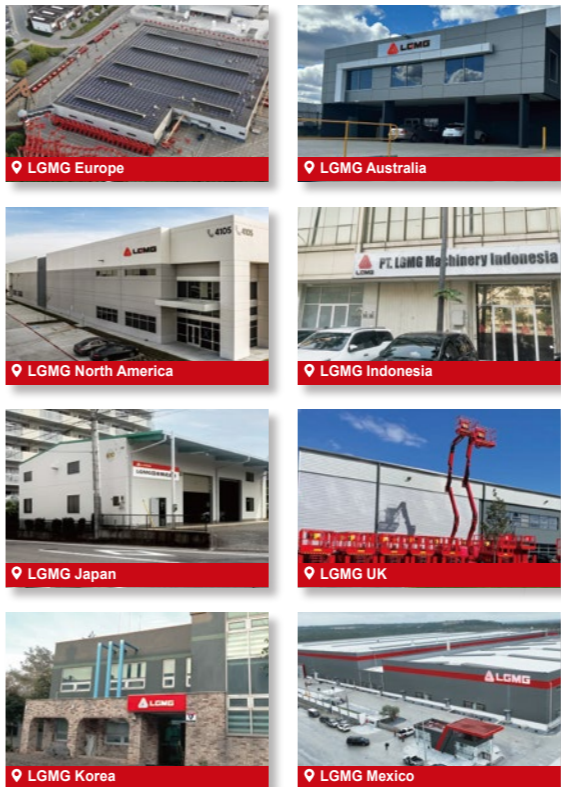
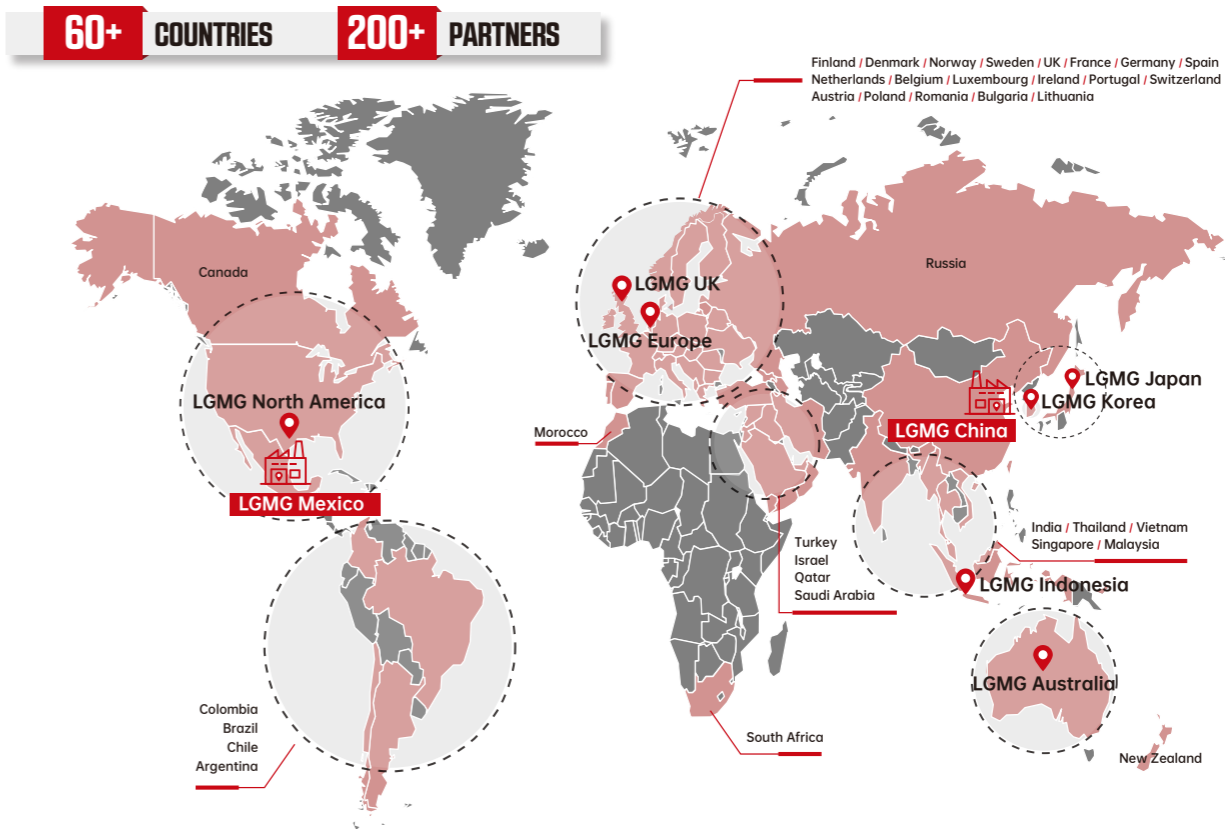
Lingong Heavy Machinery Co., Ltd. (LGMG), based in Jinan, Shandong Province, China, is a wholly-owned subsidiary of Lingong Group. LGMG's business segments include aerial work platforms, telehandlers, and mining equipment. As a notable force in China's construction machinery industry, LGMG ranks within the top 100 global construction machinery manufacturers, the top 30 in China, and is among the top five Chinese manufacturers of aerial work platforms.

LGMG continually strives for product excellence. To enhance sales, service, and parts support for aerial work platforms and telehandlers, LGMG has established wholly-owned subsidiaries across Europe, UK, North America, Australia, Japan, South Korea, and Indonesia. In 2023, the completion and inauguration of LGMG's global manufacturing base in Mexico marked a significant milestone in its expansion into overseas production.

With a global vision, LGMG aims to fully localize the overseas sales, R&D, manufacturing, service and supply chain, and create a "global ecosystem economy" development model to realize value sharing.



Global Sales Network



- LOCAL TEAM SUPPORT
- LOCAL TRAINING
- LOCAL MACHINE DELIVERY
- LOCAL SPARE PARTS
- LOCAL SERVICE

LGMG Telehandler

LGMG telehandlers have become super versatile players in the loading and unloading field due to their unparalleled flexibility, efficiency, and multifunctionality. Whether in the fields such as construction, mining, port logistics, warehousing management or agricultural production, LGMG telehandlers can always meet your diverse handling needs, effectively improving work efficiency and reducing labor costs.

The LGMG brand, with its profound manufacturing experience and relentless pursuit of high quality, ensures the excellent quality of its telehandlers. We strive for excellence not only in manufacturing and design but also in meeting the rigorous standards set by customers. Moreover, our global dealer network offers customers a comprehensive "one-stop" solution that comprises parts supply and professional services, improving operation efficiency.

LGMG's telehandlers are designed with a lifting height ranging from 5.85m to 20.7m and a load range extending from 2500kg to 5000kg, meeting all the handling needs of various application scenarios.

LGMG's telehandler family is growing, encompassing both electric and engine-powered models. In terms of design types, there are fixed telehandlers H625E, H625, H735, H1440, H1840, rotating telehandler HR2150, and agricultural telehandler HA735, demonstrating LGMG's deep understanding and professional commitment to specific application scenarios.


-  **Three in one**
-  **All-rounder**
-  **Perfect choice**



HA735
Max. Capacity: 3500kg
Max. Lifting Height: 6.9m

H735
Max. Capacity: 3500kg
Max. Lifting Height: 7m

H625
Max. Capacity: 2500kg
Max. Lifting Height: 5.94m

H625E 
Max. Capacity: 2500kg
Max. Lifting Height: 5.94m

H1440
Max. Capacity: 4000kg
Max. Lifting Height: 13.6m

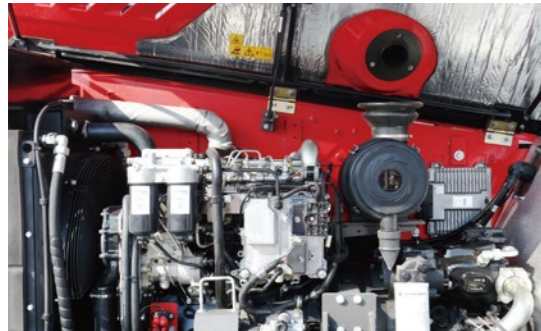
H1840
Max. Capacity: 4000kg
Max. Lifting Height: 17.6m

HR2150
Max. Capacity: 4999kg
Max. Lifting Height: 20.7m

Product Highlights

Powerful and Efficient

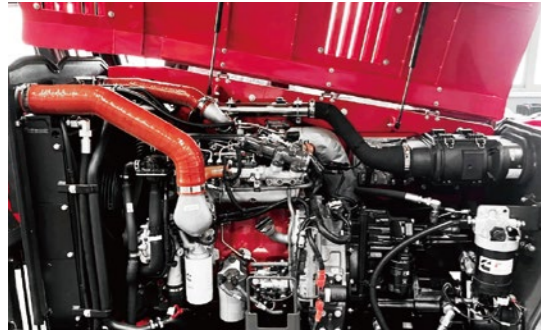
LGMG telehandlers, equipped with a high-performance engine of a renowned brand, meet Euro V and T4F standards, leading the industry's new standards with powerful driving force and excellent fuel efficiency. They have strong power while minimizing environmental impact, achieving green operations that are economical and environmental-friendly.



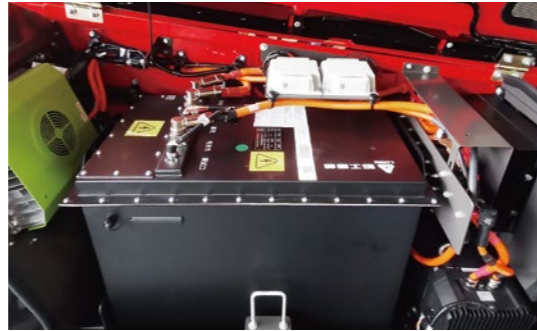
Euro III engine



Euro V engine



T4F engine



Lithium battery

Safe and Productive

The boom is made of high-strength steel plates, combined with medium-sized butt welding technology to reduce welding points and enhance the strength and toughness of the boom. It can lift heavy objects weighing up to 2500-4999kg, demonstrating extraordinary carrying capacity.



Product Highlights

Smooth Transmission

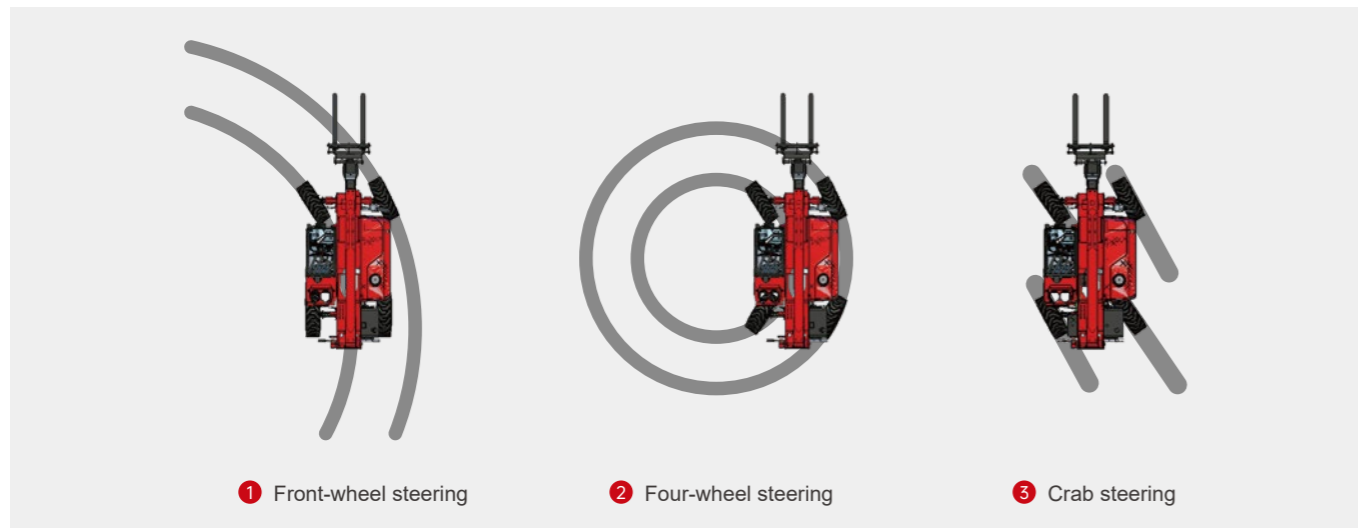
LGMG telehandlers are equipped with hydrostatic transmission or torque converter power shift transmission, meeting different operational needs.

The hydrostatic transmission system provides comfortable operation and rapid response, while the torque converter power shift transmission system offers stronger low-speed traction and improves rough terrain capabilities on harsh road.



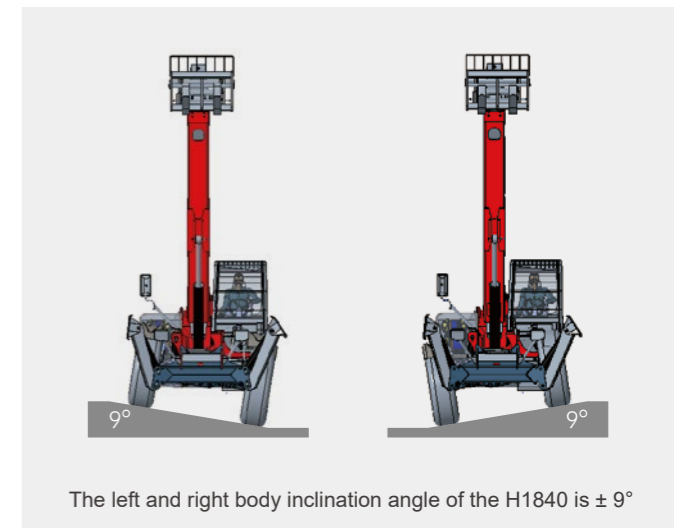
Flexible Steering

LGMG telehandlers have three steering modes: front-wheel steering¹, four-wheel steering², and crab steering³, allowing flexible operation in confined spaces. Emergency steering function ensure safe and worry free operation.



Robust and Reliable

Leveling frame allows the wheels to grip the ground when driving on uneven terrain, improving RT performance and operation adaptability. With stability and reliability, LGMG telehandlers can challenge any tough terrain with ease.



Product Highlights

Comfortable and Ergonomic

The ROPS & FOPS level II cab can provide high roll-over protection and keep the driver's safety at all times. The cab design prioritizes the driver's comfort control, featuring ergonomic button and joystick controls. The standard high-capacity air conditioning system with heater, creates a comfortable and productive operator environment. The cab can also provide excellent all-round visibility thanks to direct glazing, large roof screen, low engine house, and other features like reverse camera and rearview mirror.

- A ROPS & FOPS level II cab
- B Adjustable seats
- C Reversing camera
- D Multi-angle rearview mirror



Universal Components

The highly interchangeable components such as the boom and electronic control joystick reduce the total cost of ownership, improving the economic benefits for customers.

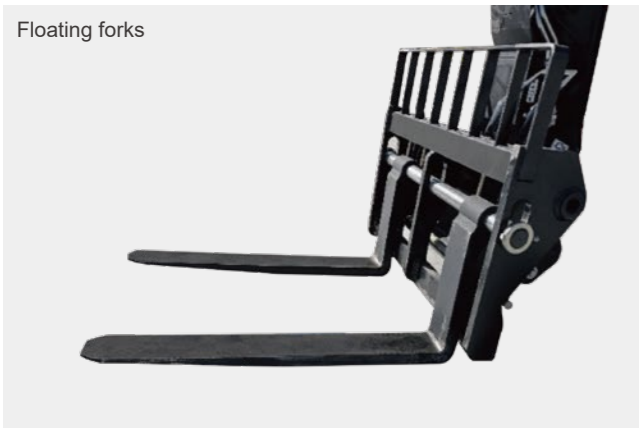


Product Highlights

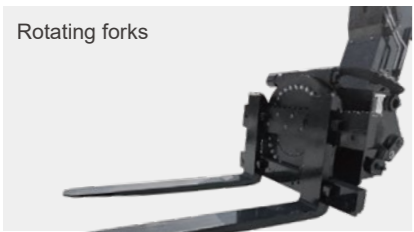
Versatile and Adaptable

It is equipped with a universal attachment quick-change interface and optional hydraulic release function, allowing rapid switching various attachments such as platforms, buckets, frame-mounted hooks, and manipulators to meet diverse operational needs.

Floating forks



Rotating forks



Bucket



Frame mounted hook



Extension work platform
(Only H1840 / HR2150)



Universal attachments interface



Multiple Tires Available

Depending on the working environment, pneumatic tyre or filling type solid tyre can be selected to provide the optimal choice for different road conditions.



Pneumatic tires greatly reduces noise, provides better anti-slip performance, and is easy to maintain.



Filling type solid tires has greater durability, is explosion-proof, and has a strong load-bearing capacity.

Fixed Telehandlers

H625E

H625/H735/H1440/H1840

Electric Powered Fixed Telehandler H625E

The H625E, LGMG's first lithium-electric telehandler, boasts unparalleled advantages including zero emissions, environmental friendliness, quiet operation, and reduced operating and maintenance costs, which are hallmark features of electric telehandlers. With a maximum lifting height of 5.94m and a maximum lifting capacity of 2,500kg, the H625E is the most compact model in LGMG's telehandler series. Its compact, lightweight design and flexible operation render it highly suitable for versatile construction tasks in confined spaces with stringent noise requirements. Furthermore, it facilitates convenient site transfers and transportation.



ZERO EMISSIONS



WHISPER-QUIET OPERATION



LOW OPERATING COSTS



Max. lifting height
5.94m
(19'6")



Max. outreach
3.41m
(11'2")



Max. capacity
2500kg
(5512 lbs)



Overall size (LxWxH)
3.99x1.86x1.97m
(13'1"x6'1"x6'6")



Lithium battery
76.8V 304Ah

Diesel Powered Fixed Telehandlers H625 / H735 / H1440 / H1840

LGMG has launched a range of fixed telehandlers driven by diesel engine, with a lifting height ranging from 6m to 18m, which are designed to take full consideration of customer's diverse demands to cover the required height and load capacity at various job sites, providing excellent productivity and reliability.

Models	Max. lifting height	Max. outreach	Max. capacity	Overall size (LxWxH)	Rated power
H625	5.94m (19'6")	3.41m (11'2")	2500kg (5512 lbs)	3.99x1.86x1.97m (13'1"x6'1"x6'6")	54.6kW (73.2hp)
H735	7m (23')	3.9m (12'10")	3500kg (7716 lbs)	4.99x2.34x2.3m (16'4"x7'8"x7'7")	54.6kW (73.2hp)
H1440	13.6m (44'7")	9.22m (30'3")	4000kg (8818 lbs)	5.62x2.44x2.67m (18'5"x8"x8'9")	74.4kW (99.8hp)
H1840	17.6m (57'9")	13.1m (43')	4000kg (8818 lbs)	5.9x2.44x2.67m (19'4"x8"x8'9")	74.4kW (99.8hp)



Agricultural Telehandler HA735

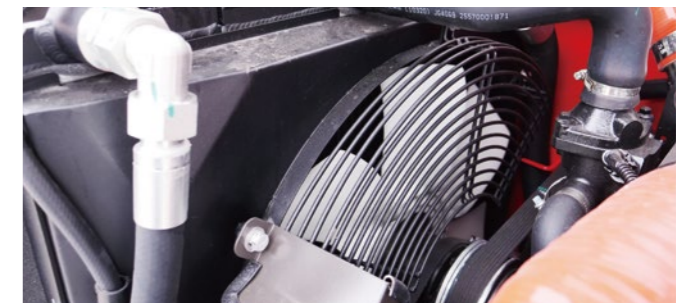


HA735 is specially tailored for agricultural use while retaining the excellent performance for construction needs. Equipped with a Yuchai 3.6L engine delivering the power of 73kw, the HA735 boasts high reliability, robust power, and low fuel consumption, making it the ideal choice for agricultural applications.

- Considering agricultural working conditions, the discharge angle of the bucket has been increased to facilitate the shoveling and unloading of viscous materials for users.
- The wider and larger wheel and tire design enhance the stability of the entire machine.
- The brake pedal integrates a power cut-off function, allowing the operator to flexibly turn it on or off according to operational needs, reducing maintenance costs, delivering greater power, and improving operational efficiency.



- The engine case boasts an innovative structural design, which not only ensures adequate heat dissipation and air intake but also effectively prevents potential malfunctions caused by debris clogging the radiator, ultimately guaranteeing the engine's stable operation and long-term durability.

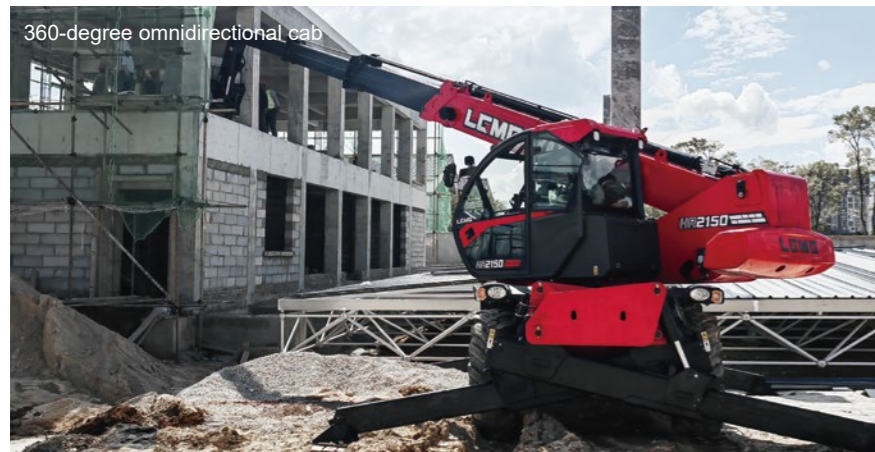


- The engine-integrated fan features a manual/automatic blowback function, enabling timely removal of debris attached to the air intake.

Rotating Telehandler **HR2150**






The HR2150 seamlessly integrates excellent performance with all-terrain adaptability. With an ingenious design, it integrates the functions of telehandlers, cranes, and aerial work platforms, earning it the title of a multi-functional tool among engineering equipment. This equipment provides unparalleled operational efficiency with its unique flexibility and wide visibility.

- Its intelligent control system design ensures convenient and safe operation, making each job easy and effortless. The combination of diversified steering modes and hydrostatic transmission technology guarantees superior maneuverability across various working environments.
- The HR2150 adopts an innovative 360-degree omnidirectional cab design, allowing for all round construction work with a fixed chassis. It is especially suitable for use in space-constrained urban construction, greatly improving the flexibility and efficiency of operations.
- The HR2150 is equipped with four independently controlled outriggers that can be extended or retracted individually or simultaneously. This makes the entire machine more stable, with stronger carrying capacity, ensuring safety and reliability under various working conditions.
- The HR2150 telehandler features an auto-leveling front axle and an actively floating rear axle, providing enhanced shock absorption. The rear axle also has an intelligent rigid lock function, which enhances the comfort of the cab and provides a smoother operating experience.



US Market-oriented Telehandler **H1056/H1256**

- Long wheelbase and wide chassis deliver more stability and reliability.
- Optimized design of cabin layout with easy and convenient maintenance.
- 55Kw Cummins engine without adding DEF lowers cost and makes it easy to maintain.
- The FOPs&ROPs cab enables safe driving.
- Electrically proportional control and load-sensitive system ensure precise operation, saving energy.
- The Human-machine interaction environment which conforms to American customs delivers high efficiency and simple operation.

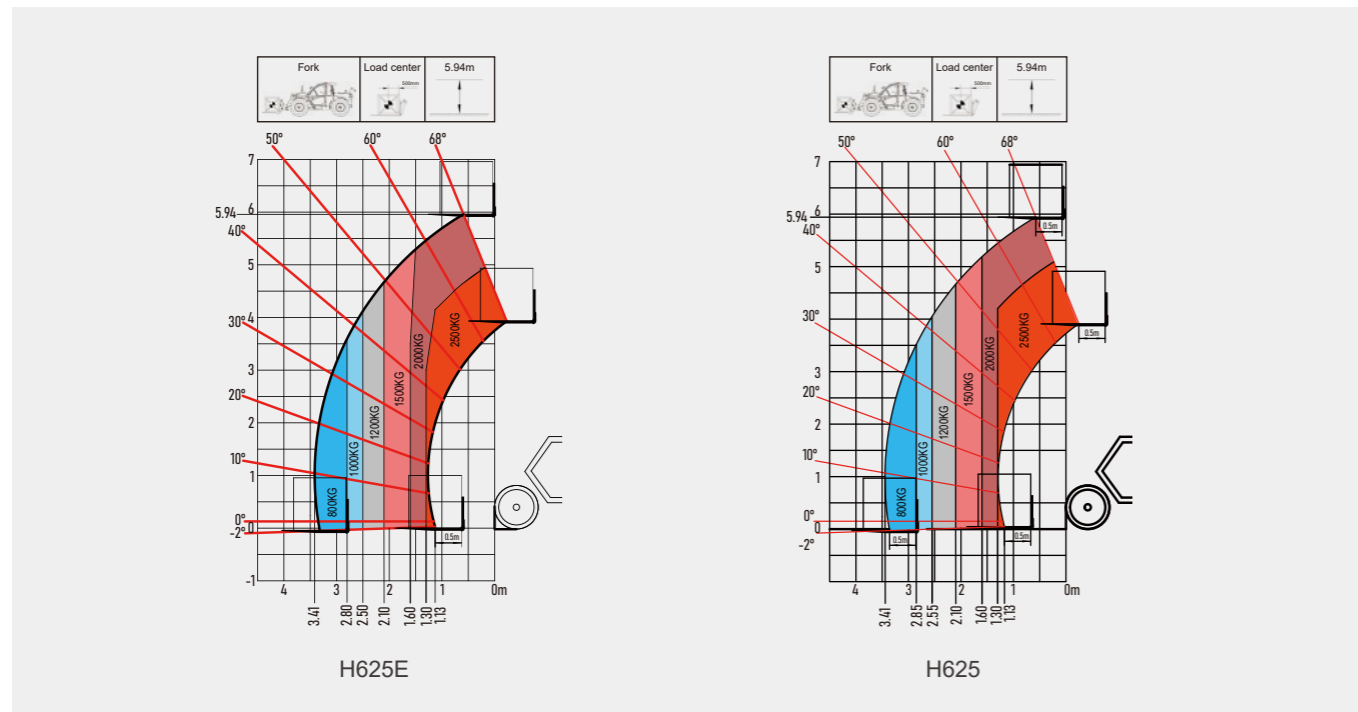
Models	 Max. lifting height	 Max. outreach	 Max. capacity	 Overall size (LxWxH)	 Rated power
H1056	56'1" (17.1m)	42' (12.8m)	10000 lbs (4535kg)	21'7"x7'11"x8'10" (6.57x2.41x2.7m)	73.8hp (55kW)
H1256	56'1" (17.1m)	42' (12.8m)	12000 lbs (5443kg)	21'7"x7'11"x8'10" (6.57x2.41x2.7m)	120.7hp (90kW)

The above two models are only sold in North America.



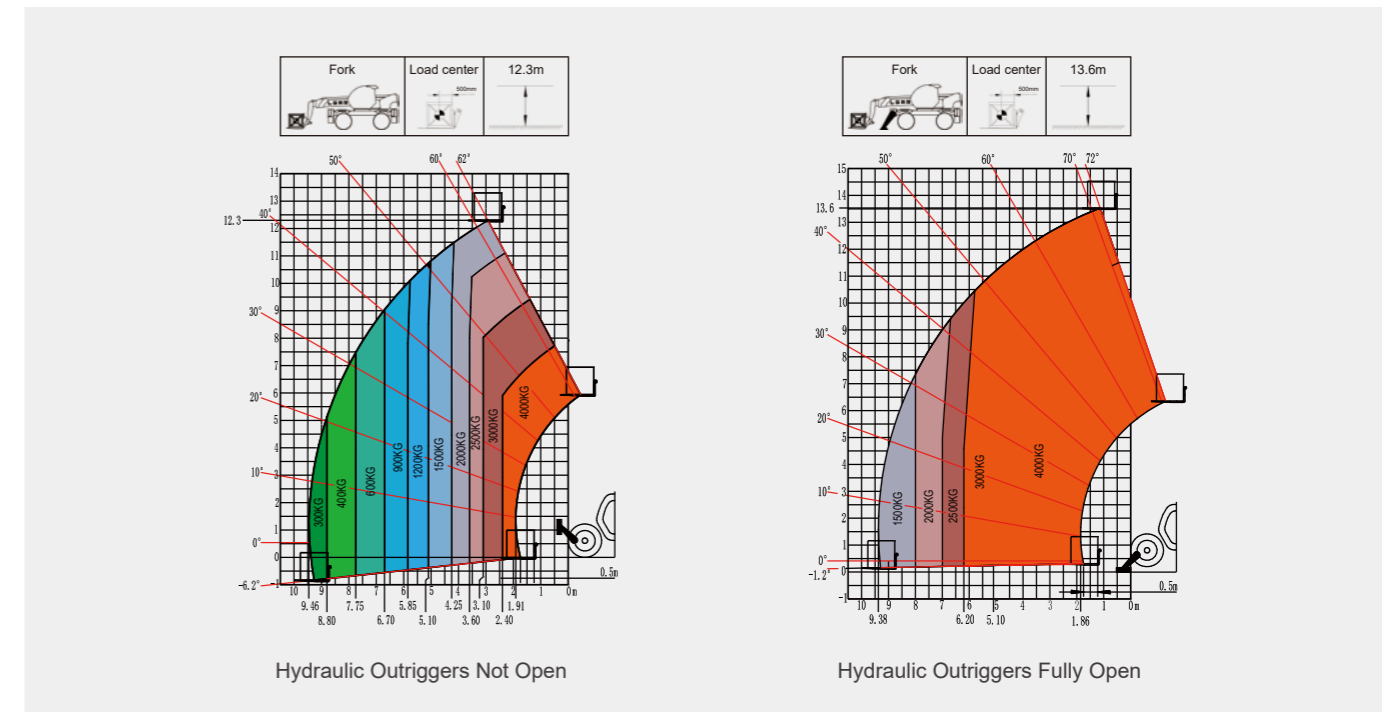
Load Charts

H625E / H625

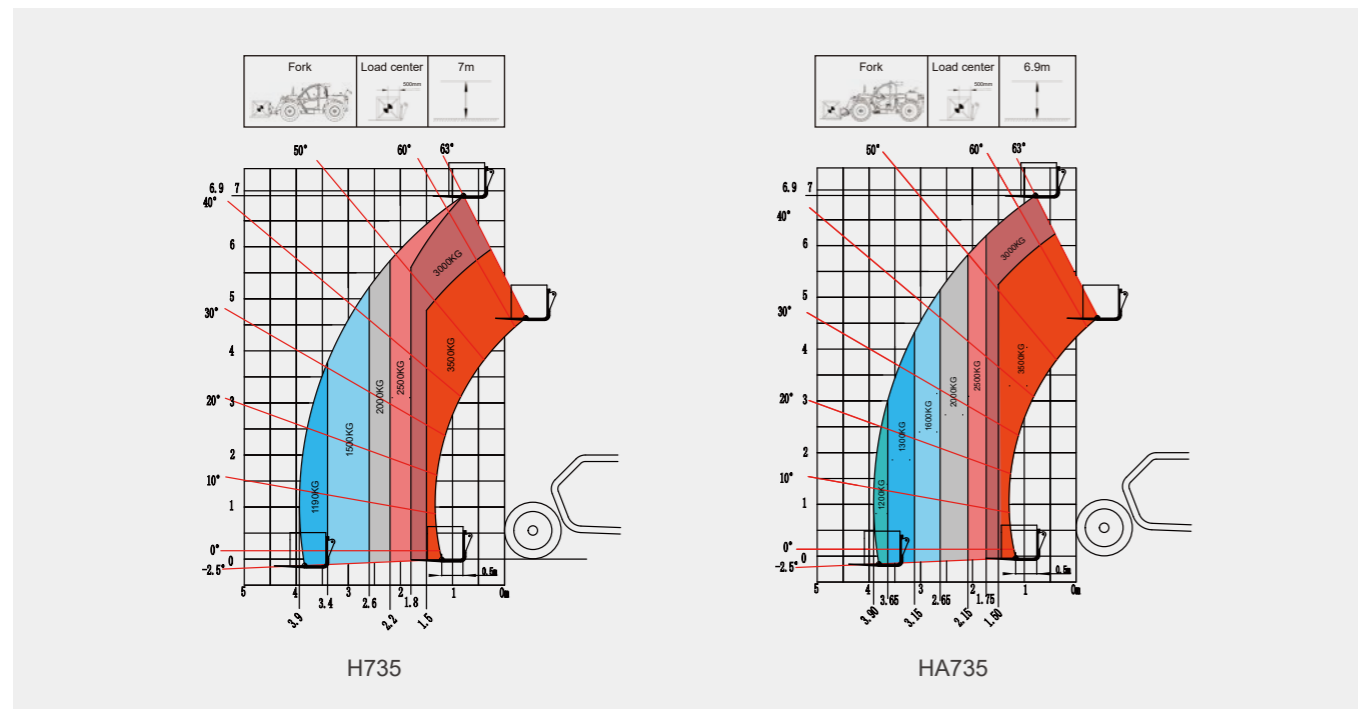


Load Charts

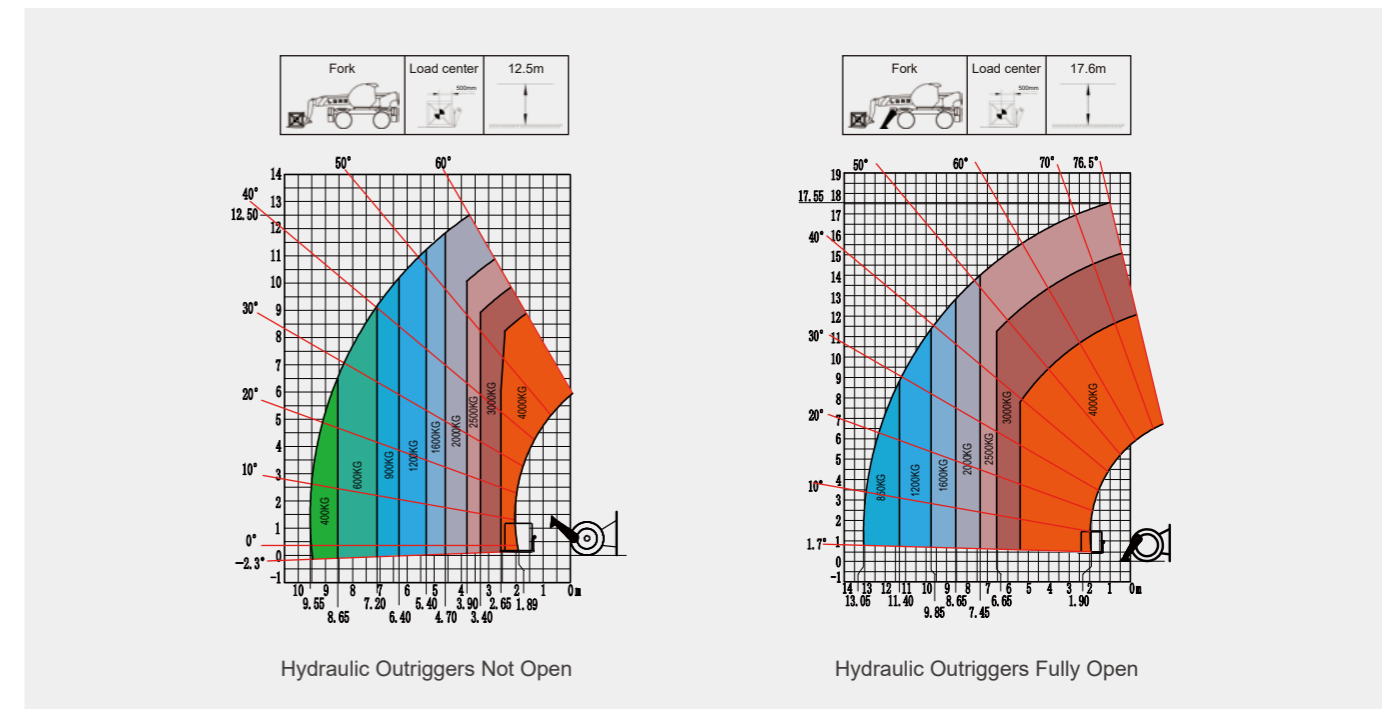
H1440



H735 / HA735

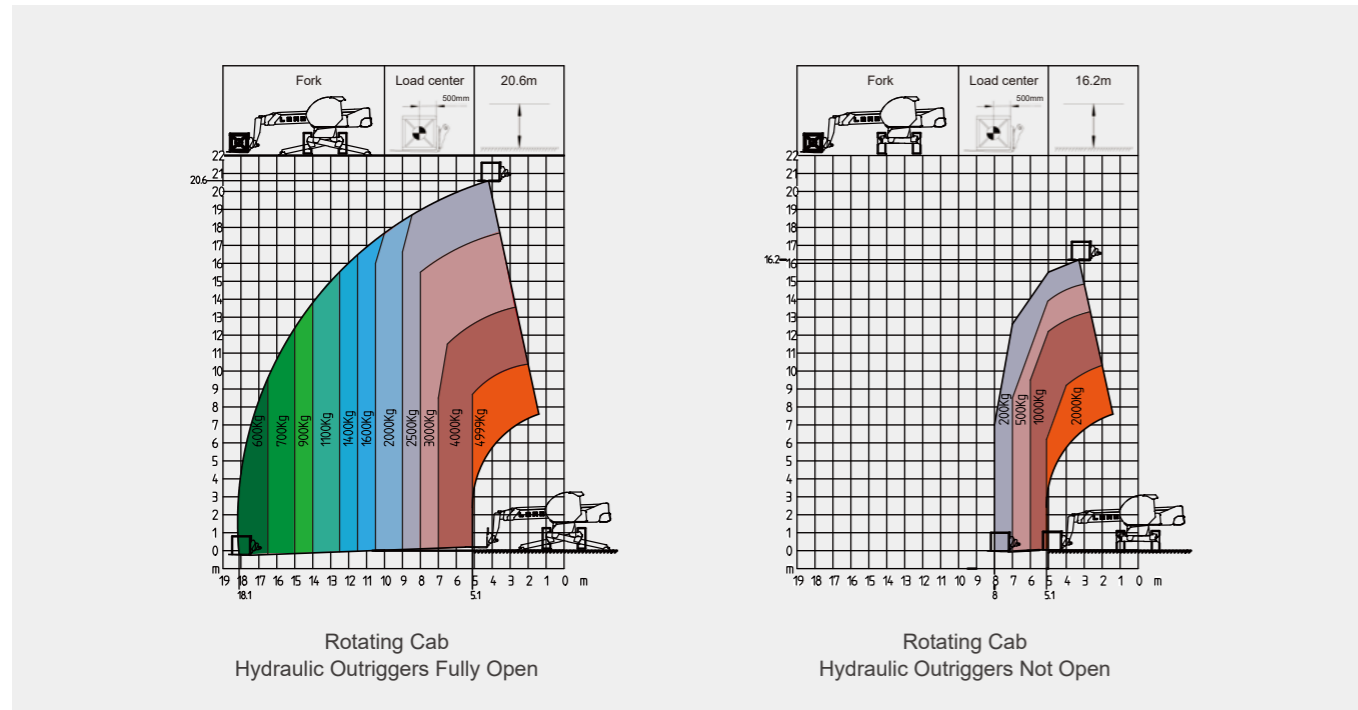


H1840



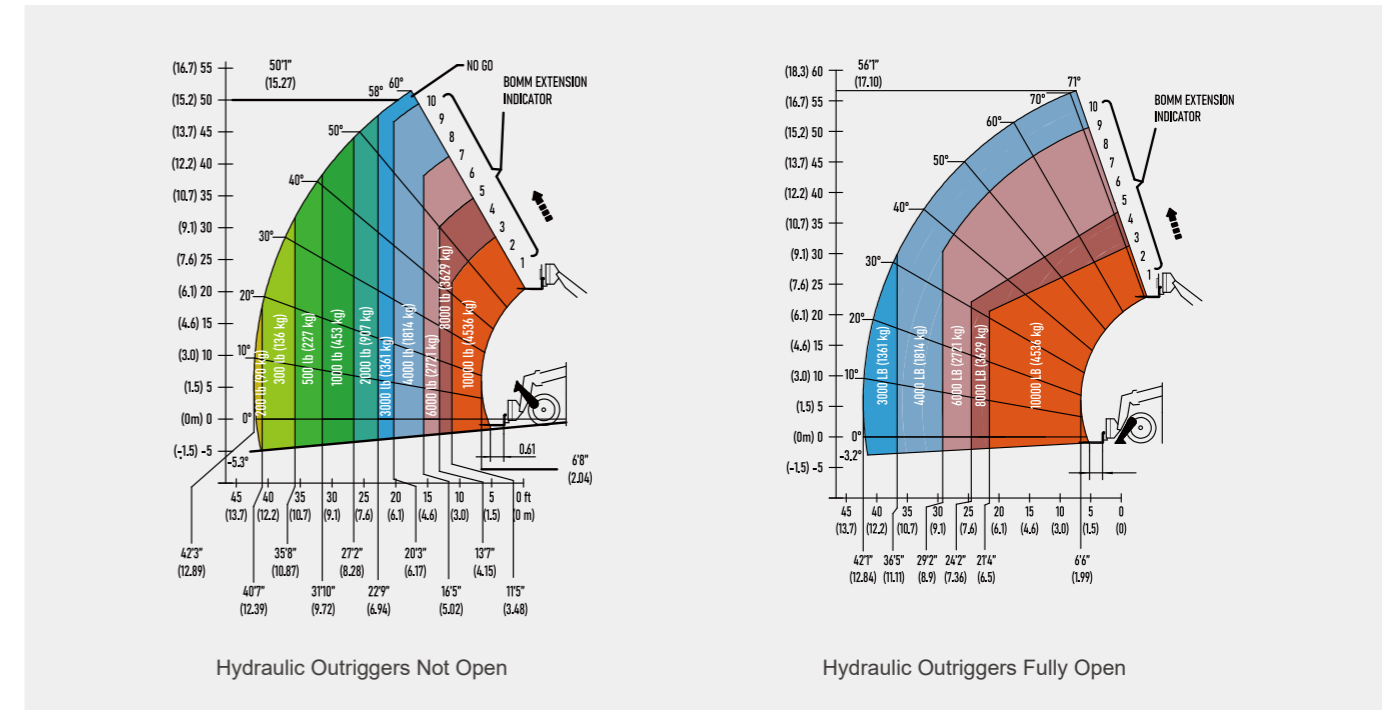
Load Charts

HR2150

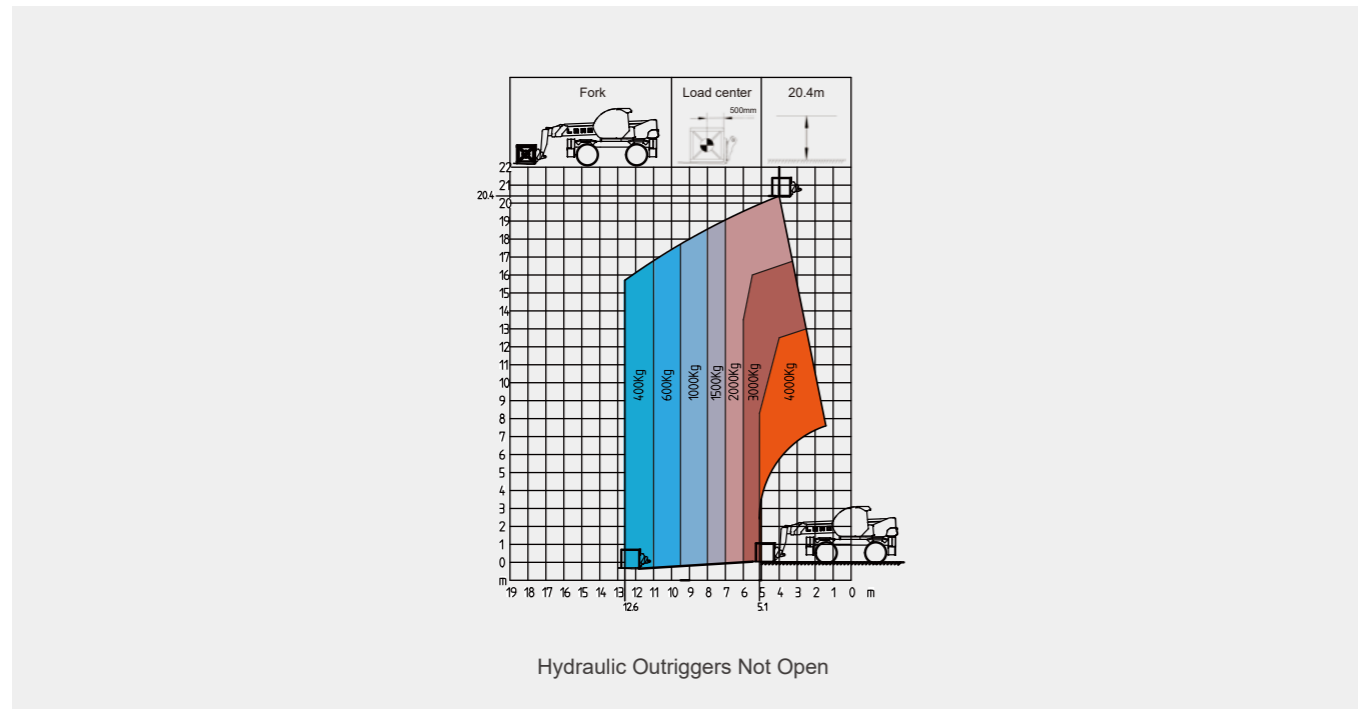


Load Charts

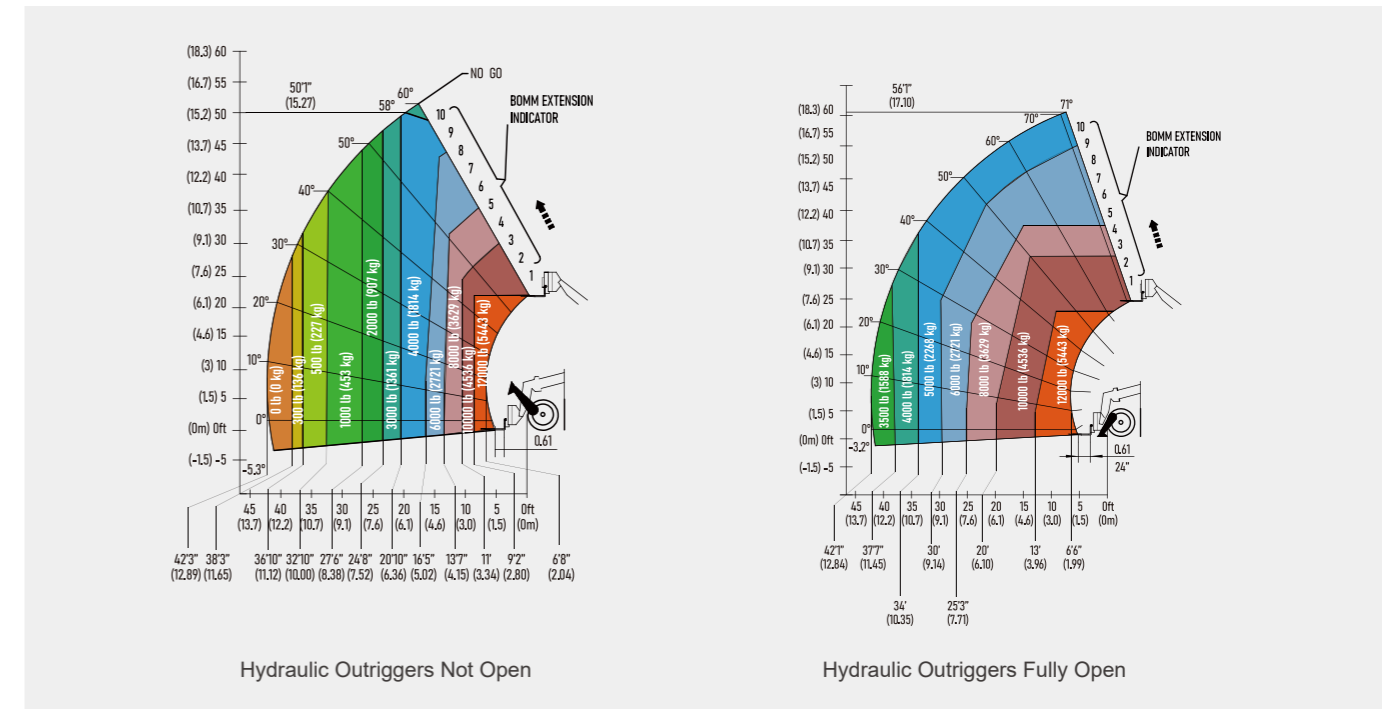
H1056



HR2150



H1256



The above two models are only sold in North America.

Specifications

MODELS	H625E	
Performance	Metric	Imperial
Max. lifting height	5.94 m	19'6"
Max. outreach	3.41 m	11'2"
Overall length	A	3.99 m
Overall width	B	1.86 m
Overall height	C	1.97 m
Wheelbase	D	2.3 m
Ground clearance	E	0.32 m
Cab width		0.81 m
Tilt-up angle		12°
Tilt-down angle		117°
Min. turning radius	3.36 m	11'
Fork size	1210x120x40 mm	48"x5"x2"
Tire size	12-16.5 12PR	
Max. capacity	2500 kg	5512 lbs
Breakout force with bucket	38 kN	
Gradeability-unladen	35%	
Tilt angle	±5°	
Machine weight	4950 kg	10913 lbs
Action speed		
Primary boom ascending time	12+0.5 s	
Primary boom descending time	8.5+0.5 s	
Boom extending time	8.5+0.5 s	
Boom retracting time	6.5+0.5 s	
Travel speed		
Travel speed	16 km/h	10 mph
Engine/Battery		
Battery technology	Lithium Battery	
Battery nominal voltage	76.8V	
Battery capacity	304Ah	
Hydraulic motor power	14kW	
Drive motor power	12.3kW	
Electric circuit		
12V Battery capacity	120Ah	
Hydraulic system		
Working pump displacement	56 L/min	14.8 US gpm
Hydraulic oil	65 L	17.2 gal
Noise and vibration		
Cab noise	74.9 dB	
Ambient noise	95.5 dB	
Vibration on hand/arms	< 2.5 m/s ²	

Specifications

MODELS	H625		H735		HA735	
Performance	Metric	Imperial	Metric	Imperial	Metric	Imperial
Max. capacity	2500 kg	5512 lbs	3500 kg	7716 lbs	3500 kg	7716 lbs
Max. lifting height	5.94 m	19'6"	7 m	23'	6.9 m	22'8"
Max. outreach	3.41 m	11'2"	3.9 m	12'10"	3.9 m	12'10"
Breakout force with bucket	38 kN		64 kN		69 kN	
Gradeability-unladen	45%		45%		45%	
Tilt angle	±5°		±5°		±5°	
Machine weight	5050 kg	11133 lbs	7000 kg	15432 lbs	7300 kg	16094 lbs
Action speed						
Primary boom ascending time	9 s		7.51 s		7.4 s	
Primary boom descending time	6.5 s		5.57 s		5.4 s	
Boom extending time	6 s		6.93 s		7.6 s	
Boom retracting time	4 s		5.32 s		4.8 s	
Travel speed						
Forward - first gear travel speed	10 km/h	6.2 mph	9 km/h	5.6 mph	4.5 km/h	2.8 mph
Forward - second gear travel speed	24.9 km/h	15.5 mph	27 km/h	16.8 mph	9.5 km/h	5.9 mph
Forward - third gear travel speed	/		/		19 km/h	11.8 mph
Forward - fourth gear travel speed	/		/		27 km/h	16.8 mph
Backward - first gear travel speed	10 km/h	6.2 mph	9 km/h	5.6 mph	4.5 km/h	2.8 mph
Backward - second gear travel speed	24.9 km/h	15.5 mph	27 km/h	16.8 mph	9.5 km/h	5.9 mph
Backward - third gear travel speed	/		/		19.5 km/h	12.1 mph
Power						
Manufacturer	Kubota (Euro III engine)		Kubota (Euro III engine)		Yuchai (Euro III engine)	
Displacement	3331 ml	203 cu.in	3331 ml	203 cu.in	3621 ml	221 cu.in
Rated power	54.6 kW	73.2 hp	54.6 kW	73.2 hp	73 kW	97.9 hp
Max. torque	261.1 N.m	192.6 lb.ft	261.1 N.m	192.6 lb.ft	420 N.m	309.8 lb.ft
Max. traction force	39 kN		43 kN		80 kN	
Power						
Manufacturer	Kubota (Euro V engine)		Kubota (Euro V engine)		/	
Displacement	3331 ml	203 cu.in	3331 ml	203 cu.in	/	
Rated power	54.6 kW	73.2 hp	54.6 kW	73.2 hp	/	
Max. torque	289.3 N.m	213.4 lb.ft	289.3 N.m	213.4 lb.ft	/	
Max. traction force	39 kN		43 kN		/	
Transfer case						
Transmission type	Hydrostatic		Hydrostatic		Torque converter power shift	
Parking brake	Electronic brake		Electronic brake, front axle parking brake			
Service brake	Multi-disc wet brake of front axle			Multi-disc wet brake of front and rear axles		
Hydraulic system						
Working pump type	Variable piston pump		Variable piston pump		Variable piston pump	
Working pump displacement	84 L/min	22.2 US gpm	112.5 L/min	29.7 US gpm	144 L/min	38 US gpm
Fuel tank volume						
Engine oil	9.5 L	2.5 gal	9.5 L	2.5 gal	9.5 L	2.5 gal
Hydraulic oil	75 L	19.8 gal	100 L	26.4 gal	100 L	26.4 gal
Fuel tank	63 L	16.6 gal	100 L	26.4 gal	130 L	34.3 gal
Noise and vibration						
Cab noise	74.5 dB		79 dB		81 dB	
Ambient noise	104 dB		104 dB		104 dB	
Vibration on hand/arms	< 2.5 m/s ²		< 2.5 m/s ²		< 2.5 m/s ²	

Specifications

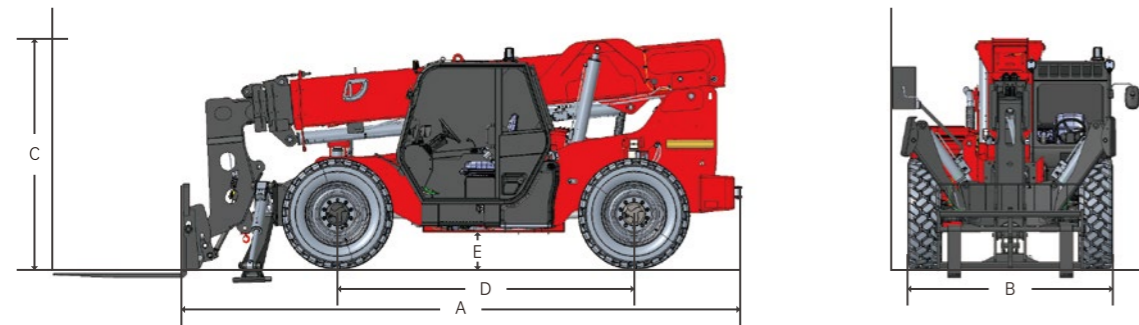
MODELS	H1440		H1840	
Performance	Metric	Imperial	Metric	Imperial
Max. capacity	4000 kg	8818 lbs	4000 kg	8818 lbs
Max. lifting height	13.6 m	44'7"	17.6 m	57'9"
Max. outreach	9.22 m	30'3"	13.1 m	43'
Breakout force with bucket (bucket-1 cubic meter)	87 kN		87 kN	
Gradeability-unladen	65%		65%	
Tilt angle	±9°		±9°	
Machine weight	12050 kg	26566 lbs	12350 kg	27227 lbs
Action speed				
Primary boom ascending time	14 s		14 s	
Primary boom descending time	16 s		16 s	
Boom extending time	22 s		22 s	
Boom retracting time	15 s		15 s	
Speed				
Forward - first gear travel speed	5 km/h	3.1 mph	5 km/h	3.1 mph
Forward - second gear travel speed	12 km/h	7.5 mph	12 km/h	7.5 mph
Forward - third gear travel speed	20 km/h	12.4 mph	20 km/h	12.4 mph
Forward - fourth gear travel speed	30 km/h	18.6 mph	30 km/h	18.6 mph
Backward - first gear travel speed	5 km/h	3.1 mph	5 km/h	3.1 mph
Backward - second gear travel speed	12 km/h	7.5 mph	12 km/h	7.5 mph
Backward - third gear travel speed	20 km/h	12.4 mph	20 km/h	12.4 mph
Power				
Manufacturer	Perkins (Euro III engine)		Perkins (Euro III engine)	
Displacement	4400 ml	269 cu.in	4400 ml	269 cu.in
Rated power	74.5 kW	99.9 hp	74.5 kW	99.9 hp
Max. torque	420 N.m	310 lb.ft	420 N.m	310 lb.ft
Max. traction force	93 kN		93 kN	
Power				
Manufacturer	Perkins (Euro V engine)		Perkins (Euro V engine)	
Displacement	3620 ml	221 cu.in	3620 ml	221 cu.in
Rated power	55.4/74.4 kW	74.5/99.8 hp	55.4/74.4 kW	74.3/99.8 hp
Max. torque	424/430 N.m	313/317 lb.ft	424/430 N.m	313/317 lb.ft
Max. traction force	93 kN		93 kN	
Transfer case				
Transmission type	Torque converter power shift		Torque converter power shift	
Parking brake	Electronic brake, front axle parking brake		Electronic brake, front axle parking brake	
Service brake	Multi-disc wet brake of front axle		Multi-disc wet brake of front axle	
Hydraulic system				
Working pump type	Variable piston pump		Variable piston pump	
Working pump displacement	138.6 L/min	36.6 US gpm	138.6 L/min	36.6 US gpm
Fuel tank volume				
Engine oil	9.5 L	2.5 gal	9.5 L	2.5 gal
Hydraulic oil	180 L	47.6 gal	180 L	47.6 gal
Fuel tank	150 L	39.6 gal	150 L	39.6 gal
Noise and vibration				
Cab noise	76 dB		76 dB	
Ambient noise	105 dB		105 dB	
Vibration on hand/arms	< 2.5 m/s ²		< 2.5 m/s ²	

Specifications

MODELS	H1840		HR2150	
Performance	Metric	Imperial	Metric	Imperial
Max. capacity	4000 kg	8818 lbs	4999 kg	11021 lbs
Max. lifting height	17.6 m	57'9"	20.7 m	67'11"
Max. outreach	13.1 m	43'	18.1 m	59'5"
Breakout force with bucket	87 kN		107 kN	
Gradeability-unladen	65%		65%	
Tilt angle	±9°		±9°	
Machine weight	12200 kg	26896 lbs	17100 kg	37699 lbs
Action speed				
Primary boom ascending time	14 s		27 s	
Primary boom descending time	16 s		22 s	
Boom extending time	22 s		32 s	
Boom retracting time	15 s		23 s	
Speed				
Forward - first gear travel speed	10 km/h	6.2 mph	5 km/h	3.1 mph
Forward - second gear travel speed	30 km/h	18.6 mph	30 km/h	18.6 mph
Forward - third gear travel speed	/		/	
Forward - fourth gear travel speed	/		/	
Backward - first gear travel speed	10 km/h	6.2 mph	5 km/h	3.1 mph
Backward - second gear travel speed	30 km/h	18.6 mph	30 km/h	18.6 mph
Backward - third gear travel speed	/		/	
Power				
Manufacturer	Perkins (Euro III engine)		Perkins (Euro III engine)	
Displacement	4400 ml	268.5 cu.in	4400 ml	268.5 cu.in
Rated power	74.5 kW	99.9 hp	106 kW	142.1 hp
Max. torque	420 N.m	309.8 lb.ft	558 N.m	411.6 lb.ft
Max. traction force	69 kN		96 kN	
Power				
Manufacturer	/		Perkins (Euro V engine)	
Displacement	/		4400 ml	268.5 cu.in
Rated power	/		110.1 kW	147.7 hp
Max. torque	/		560 N.m	413.1 lb.ft
Max. traction force	/		96 kN	
Transfer case				
Transmission type	Hydrostatic		Hydrostatic	
Parking brake	Front axle parking brake		Mechanical brake, rear axle parking brake	
Service brake	Multi-disc wet brake of front axle		Multi-disc wet brake of front and rear axles	
Hydraulic system				
Working pump type	Open pump		Variable piston pump	
Working pump displacement	138.6 L/min	36.6 US gpm	132 L/min	34.9 US gpm
Fuel tank volume				
Engine oil	9.5 L	2.5 gal	9.5 L	2.5 gal
Hydraulic oil	180 L	47.6 gal	260 L	68.7 gal
Fuel tank	150 L	39.6 gal	170 L	44.9 gal
Noise and vibration				
Cab noise	76 dB		76 dB	
Ambient noise	105 dB		108 dB	
Vibration on hand/arms	< 2.5 m/s ²		< 2.5 m/s ²	

Specifications

MODELS	H1056		H1256	
Performance	Metric	Imperial	Metric	Imperial
Max. lifting height	56'1"	17.1 m	56'1"	17.1 m
Max. outreach	42'	12.8 m	42'	12.8 m
Overall length	A	21'7"	21'7"	6.57 m
Overall width	B	7'11"	7'11"	2.41 m
Overall height	C	8'10"	8'10"	2.7 m
Wheelbase	D	11'6"	11'6"	3.5 m
Ground clearance	E	1'1"	1'4"	0.4 m
Min. turning radius		≤14'1"	≤14'1"	≤4.3 m
Tire size	400/75-28		400/75-28	
Service brake	Multi-disc wet brake		Multi-disc wet brake	
Max. capacity	10000 lbs	4535 kg	12000 lbs	5443 kg
Gradeability-unladen	50%		50%	
Tilt angle	±10°		±10°	
Machine weight	33730 lbs	15300 kg	34833 lbs	15800 kg
Action speed				
Primary boom ascending time	15-25 s		15-25 s	
Primary boom descending time	10-20 s		10-20 s	
Boom extending time	20-30 s		20-30 s	
Boom retracting time	15-25 s		15-25 s	
Travel speed				
Forward - First Gear Travel Speed	3.1 mph	5 km/h	3.1 mph	5 km/h
Forward - Second Gear Travel Speed	5.6 mph	9 km/h	5.6 mph	9 km/h
Forward - Third Gear Travel Speed	10 mph	16 km/h	11.8 mph	19 km/h
Forward - Fourth Gear Travel Speed	15.5 mph	25 km/h	15.5 mph	25 km/h
Backward - First Gear Travel Speed	3.1 mph	5 km/h	3.1 mph	5 km/h
Backward - Second Gear Travel Speed	5.6 mph	9 km/h	5.6 mph	9 km/h
Backward - Third Gear Travel Speed	10 mph	16 km/h	11.8 mph	19 km/h
Power				
Manufacturer	Cummins		Cummins	
Displacement	231.9 cu.in	3800 ml	231.9 cu.in	3800 ml
Rated power	73.8 hp	55 kW	120.7 hp	90 kW
Max. torque	295 lb.ft	400 N.m	368.8 lb.ft	500 N.m
Fuel tank	38.3 gal	145 L	38.3 gal	145 L
Engine oil	2.9 gal	11 L	2.9 gal	11 L
Hydraulic system				
Hydraulic oil	37.5 gal	142 L	37.5 gal	142 L

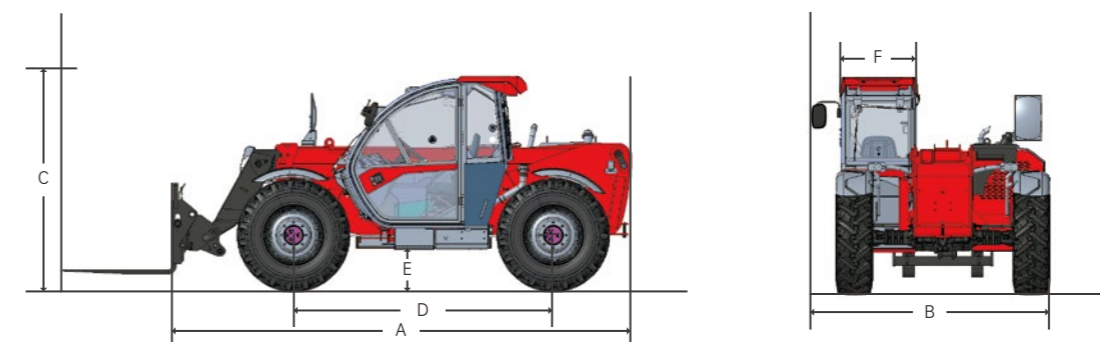


Specifications

MODELS	H625		H735	
Measurements	Metric	Imperial	Metric	Imperial
Overall length	A	3.99 m	13'1"	4.99 m
Overall width	B	1.86 m	6'1"	2.34 m
Overall height	C	1.97 m	6'6"	2.3 m
Wheelbase	D	2.3 m	7'7"	2.85 m
Ground clearance	E	0.32 m	1'1"	0.43 m
Cab width	F	0.81 m	2'8"	0.85 m
Tilt-up angle	12°		12°	
Tilt-down angle	117°		114°	
Min. turning radius	3.36 m	11'	3.9 m	12'10"
Fork size	1250x120x40 mm	49"x5"x2"	1250x120x45 mm	49"x5"x2"
Tire size	12-16.5 12PR		400/80 R24	

MODELS	HA735		H1440	
Measurements	Metric	Imperial	Metric	Imperial
Overall length	A	4.91 m	16'1"	5.62 m
Overall width	B	2.41 m	7'11"	2.44 m
Overall height	C	2.31 m	7'7"	2.67 m
Wheelbase	D	2.9 m	9'6"	3.07 m
Ground clearance	E	0.41 m	1'4"	0.41 m
Cab width	F	0.85 m	2'9"	0.98 m
Tilt-up angle	13°		12.5°	
Tilt-down angle	134°		112°	
Min. turning radius	4.1 m	13'5"	4.3 m	14'1"
Fork size	1250x120x45 mm	49"x5"x2"	1200x125x50 mm	47"x5"x2"
Tire size	460/70 R24		440/80 R24	

MODELS	H1840		HR2150	
Measurements	Metric	Imperial	Metric	Imperial
Overall length	A	5.9 m	19'4"	6.86 m
Overall width	B	2.44 m	8'	2.46 m
Overall height	C	2.67 m	8'9"	3.15 m
Wheelbase	D	3.07 m	10'1"	2.75 m
Ground clearance	E	0.41 m	1'4"	0.39 m
Cab width	F	0.98 m	3'3"	0.98 m
Tilt-up angle	12.5°		10°	
Tilt-down angle	112°		106°	
Min. turning radius	4.3 m	14'1"	3.65 m	12'
Fork size	1200x125x50 mm	47"x5"x2"	1200x125x60 mm	47"x5"x2"
Tire size	440/80 R24		445/70 R22.5	



Options

● Standard ○ Optional — No such configuration

PRODUCT MODEL	H625E	H625	H735	HA735	H1440	H1840	HR2150
Cab							
Front wiper	●	●	●	●	●	●	●
Rear wiper	●	●	●	●	●	●	●
Side wiper	●	●	●	●	●	●	●
Top wiper	—	—	●	●	●	●	●
Boom module							
Floating forks	●	●	●	○	●	●	●
Fixed forks	○	○	○	●	○	○	○
Construction bucket (0.75 cubic meter)	○	○	—	—	—	—	—
Construction bucket (1 cubic meter)	—	—	○	○	○	○	○
Agricultural bucket (2 cubic meter)	—	—	—	○	—	—	—
Agricultural bucket (2.5 cubic meter)	—	—	—	○	—	—	—
Frame mounted hook	○	○	○	○	○	○	○
Rotating forks	○	○	○	○	○	○	○
Wrapped bale clamp	—	—	○	○	—	—	—
Three-needle fork	—	—	○	○	—	—	—
Square bale forks	—	—	○	○	—	—	—
Extension work platform	—	—	—	—	—	○	○
Glass suction cup	—	—	—	—	—	—	○
Fixed adjustable fork assy	—	—	○	—	○	○	○
Single arm and dual hook assy	○	○	○	○	○	○	—
Air conditioning system							
Refrigeration and heating	●	●	●	●	●	●	●
External circulation fresh air system	●	●	●	●	●	●	●
Two-level air speed	●	●	●	●	●	●	●
Three-level air speed	●	●	●	●	●	●	●
Four-level air speed	—	—	—	—	—	—	—
Electrical system							
Function mode selection	●	●	●	●	●	●	●
Man-machine interactive operation keyboard	●	●	●	●	●	●	●
Instrument	●	●	●	●	●	●	●
Emergency stop switch	●	●	●	●	●	●	●
Front and rear axle wheel alignment detection	●	●	●	●	●	●	●
Combined joystick	●	●	●	●	●	●	●
Mileage display	●	●	●	●	●	●	●
Vehicle level inspection-mechanical level	●	●	●	●	●	●	●
Driving brake detection	●	●	●	●	●	●	●
Safety belt detection	●	●	●	●	●	●	●
Driver departure alarm detection	●	●	●	●	●	●	●
Door opening detection	●	●	●	●	●	●	●
Front and rear combined headlights	●	●	●	●	●	●	●
Rear lighting	●	●	●	●	●	●	●
Hazard alarm buzzer prompt	●	●	●	●	●	●	●
Alarm light	●	●	●	●	●	●	●
Boom angle detection	●	●	●	●	●	●	●
Body level tilt sensor detection	—	—	—	—	—	—	●
In-place detection of outriggers	—	—	—	—	●	●	●
Extension and retraction pressure detection of outriggers	—	—	—	—	●	●	—

Options

● Standard ○ Optional — No such configuration

PRODUCT MODEL	H625E	H625	H735	HA735	H1440	H1840	HR2150
Electrical system							
Job warning horn	●	●	●	●	●	●	●
Elevating platform control	—	—	—	—	—	—	○
Elevating platform weighing	—	—	—	—	—	—	●
Amplitude limitation	●	●	●	●	●	●	●
Wireless remote control	—	—	—	—	—	—	●
Platform lighting	○	○	○	○	○	○	—
Weighing detection control	●	●	●	●	●	●	●
Reverse dust removal	—	—	—	●	—	—	—
Reversing camera	○	○	○	○	○	○	○
Positioning system - Trackunit (reserved interface)	○	○	—	—	—	—	—
Bluetooth radio	●	●	—	●	●	●	●
Cold start							
Engine prewarming	—	●	●	●	●	●	●
Cold weather package	○	○	○	○	○	○	—
Transmission module							
Carraro transfer case	●	●	●	—	—	●	●
Carraro gearbox	—	—	—	●	●	●	—
Travel module							
Four-wheel drive	●	●	●	●	●	●	●
Front axle - Carraro	●	●	●	●	●	●	●
Rear axle - Carraro	●	●	●	●	●	●	●
Air filled tire	●	●	●	●	●	●	●
Hydraulic module							
Open load sensitive system	●	●	●	●	●	●	●

Top Service

LGMG provides comprehensive pre-sales, sales and after-sales attentive service. Integrating precise service into every link closely related to each customer, providing provide technical support, training programs, warranty and parts sales to customers during the whole machine life-cycle.

Technical Support

LGMG service teams always provide remote technical support by phone or email and even on-site support with manuals, tools, information and service solutions.

Training Support

LGMG provides various training programs for operators and service technicians, helping rental companies to improve their service and training capabilities via dedicated courses prepared by LGMG teams either online or on-site.

Parts Support

LGMG provides sufficient stock of parts in LGMG's global service centers. Accurate parts manuals and technical support teams are always available to answer your questions.

