

# SMHC45V

## SANY Material Handling Machine

45V material handlers are widely used for handling loading and unloading operations of scrap steels and bulk cargo, the machine is light and flexible with stable performance and high work efficiency.



▶ 1

### Hydraulic system

Independent researched and developed electronically controlled positive flow hydraulic system, fuel consumption is 10% lower than that of last year.

▶ 2

### Power system

engine and hydraulic pump curves perfectly match, system simulation reduces fuel consumption in the working area.

▶ 3

### Control program

engine automatic idle, multi-speed adjustable; The throttling loss in linkage condition is reduced by 60%.

▶ 4

### Larger grab weight

a single grab capacity is up to 4tons, according to different cargo, the efficiency is 120 ~ 260 tons/hour.

▶ 5

### Faster response

the response time of each action is as low as 300ms

▶ 6

### Track chassis

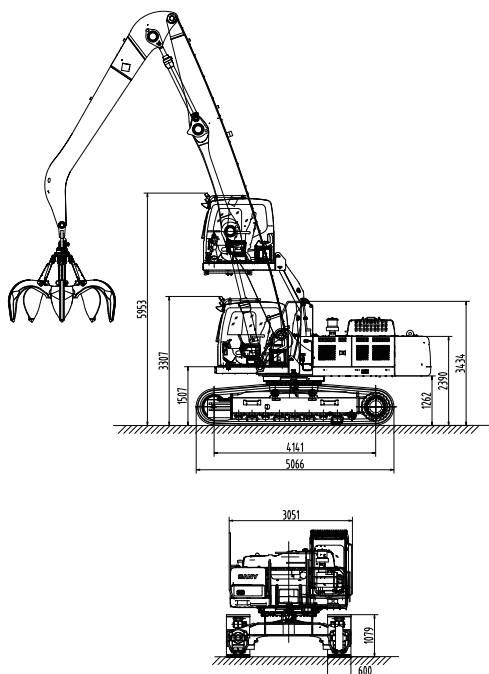
stable and efficient.



## ► Product Parameters

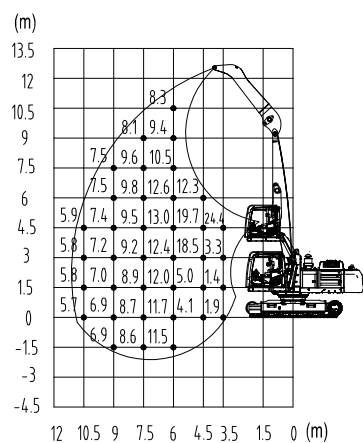
Technical Parameter					Configuration Parameter					
ITEM			UNIT	SMHC45V	CONFIGURATION		UNIT	SMHC45V		
Power System	Engine	Model	-	Isuzu 6HK1	Slewing Gear	Slewing Bearing	-	Sany		
		Rated power	kW/rpm	212/2000		Max. Rotating Speed	rpm	8		
		Torque	Nm/rpm	1080/1500	Cabin	Cabin Lift Height	mm	2650		
		Emission	-	com III		Basic Parameters	Boom Configuration	m	11	14
		Oil Tank Capacity	L	600				m	Boom 7	Boom 8.6
			m	Stick 4.5	Stick 6					
Traveling Gear	Working Gauge		mm	2590			Max. Operating Radius	m	10.5	13.5
	Wheel Base		mm	4140			Max. Operating Height	m	12	15
	Track Width		mm	600			Max. Operating Depth	m	-1.5	-3
	Max. Travelling Speed		km/h	5			Max. Operating Radius (Grab Not Included)	t	5.9	4.1
Hydraulic System	Type Of Control		-	Electronically Controlled Positive Flow System						
	Main Pump	Model	-	Kawasaki						
		Rated Flow	L/min	2×320						
	Main Valve		-	Kawasaki						
	Rotary Motor		-	Sany						
	Max. System Pressure		MPa	32						
	Hydraulic Oil Tank		L	310						

## ► Dimensions



## ► Scope Of Work

**SMHC45V Lift capacities of material handler**  
(Boom 7m, Stick 4.5m, Unit:t)



**SMHC45V Lift capacities of material handler**  
(Boom 8.6m, Stick 6m, Unit:t)

